

RAD IQ™ BP200C



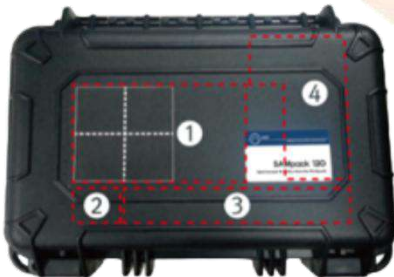
Backpack RIID (Radiological Isotope Identification Device)

“Smaller. Smarter. Truly Hands-Free”

The primary design objective of the RAD IQ™ BP 200C was to be **lightweight** and **compact**, allowing for **fatigue-free** and **hands-free** operation for first responders and covert search applications without compromising performance.

The standard configuration includes a 3x3 inch scintillation detector and a GM tube for detecting gamma rays, with the option to add neutron detectors as needed. All components are housed in a water- and shock-resistant reinforced Pelican case.

Tailored configurations are readily available to fulfill your unique requirements.



- ① Gamma detector
- ② GM tube
- ③ Neutron detector
- ④ Battery and electronics



Data acquisition and display are facilitated through a PDA or a tablet PC, which connect wirelessly.

Applications

- Homeland Security
- Emergency Responder
- Safeguard and nuclear security
- Radiological Area Mapping
- Geological Radiation Survey

Key Features

- Hands-free operation
- Small form factor and lightweight
- Bluetooth communication to PDAs
- One-touch reach-back service
- Sourceless auto-stabilization
- Water/shock resistant pelican case

❖ Software applications designed for PDAs or Tablet PCs

Event acquisition, display, and control can be done wirelessly using either a smartphone or a tablet PC. The PDA display presents users with clear and easily readable information, allowing for the assessment of current radiological levels, personal safety, and radionuclide identification.

We provide two distinct versions of our software applications tailored to meet the needs of both PDA and tablet PC users. These applications are designed to enhance convenience and performance, featuring an intuitive menu and a hierarchical layout that facilitates easy navigation and operation.

PeakAbout



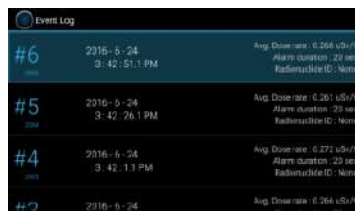
Home screen

PeakAbout and PeakGo provide essential features like GPS tagging, photo and video attachments, pop-up help, and one-touch reachback functionality.

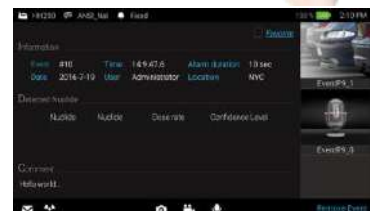
PeakAbout enhances operational efficiency with hands-free interaction and real-time communication with the command center via smartphone.



Spectrum manipulation



Event Log



Photo/audio capture

PeakGo



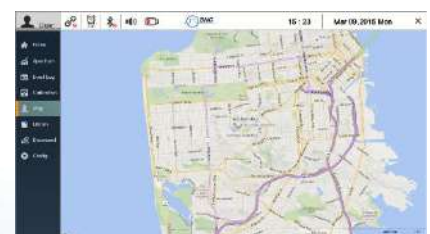
Measurement status, visual display, spectrum analysis, background measurement, configuration, and calibration are all controlled by the Tablet PC and its application software PeakGo.



Home screen



Analysis screen



Map screen

❖ Specifications

DETECTORS			
Gamma detector	NaI(Tl) : 2x2, 3x3 inch. CeBr3 or LaBr3: 1.5x1.5, 2x2 inch		
Gamma (High dose)	Gain compensation Geiger-Muller detector		
Neutron detector	He-3, Domino (Solid-state), or CLLBC		
PERFORMANCE			
Energy Range	30 KeV - 3 MeV		
Dose rate range	< 100nSv/h ~ 1mSv/h (Scintillation detector), 1mSv/h ~ 10mSv/h (GM tube)		
Energy resolution	< 8% (NaI), < 5% (CeBr, LaBr, CLLBC)		
Linearity	< 2% (Realtime Linearization by firmware)		
MCA Channel	16bit 1024ch		
Stabilization	Temperature corrected real time stabilization		
BATTERY			
Type	Lithium Ion	Operation Time	>8 hr.
PHYSICAL			
Dimensions(WxDxH)	280 mm x 190 mm x 100mm	Weight	3.5 kg (7.7 lb)
ENVIRONMENTAL			
Operating Temp	-20 °C (-4°F) ~ 50 °C (122°F)	Protection Rating	IP65
Relative Humidity	10 to 80%, non condensing	Testing Condition	EN 61326, MIL-STD-810G 501.5, MIL-STD-810G 514.6
ACCESSORIES			
Carrying Case	Pelican-type hard case	Charger	USB charger
Backpack	Backpack or waist backpack	PDA Tablet PC	Samsung Galaxy J5 or equivalent Samsung Tablet or equivalent
SOFTWARE			
Reach-back	ANSI N42.42 or CSV event data via a smartphone or a tablet PC		
Application SW	PeakAbout: Android based application SW for a smartphone PeakGo: Windows based application SW for a Tablet PC PeakID: Windows based application SW for a command center		
DETECTABLE ISOTOPE LIST			
Norm	K ⁴⁰ , Ra ²²⁶ and daughters, Th ²³² and daughters		
Medical	F ¹⁸ , Cr ⁵¹ , Ga ⁶⁷ , Mo ⁹⁹ , Tc ^{99m} , Pd ¹⁰³ , In ¹¹¹ , I ¹²³ , I ¹²⁵ , I ¹³¹ , Xe ¹³³ , Sm ¹⁵³ , Tl ²⁰¹		
Industrial	Na ²² , Co ⁵⁷ , Co ⁶⁰ , Se ⁷⁵ , Rh ¹⁰⁶ , I ¹³² , I ¹³³ , Ba ¹³³ , Cs ¹³⁴ , Cs ¹³⁷ , Eu ¹⁵² , Ir ¹⁹² , Am ²⁴¹		
SNM	U ²³³ , U ²³⁵ , U ²³⁸ , Pu ²³⁹ , Pu ²⁴¹ , Np ²³⁷		

